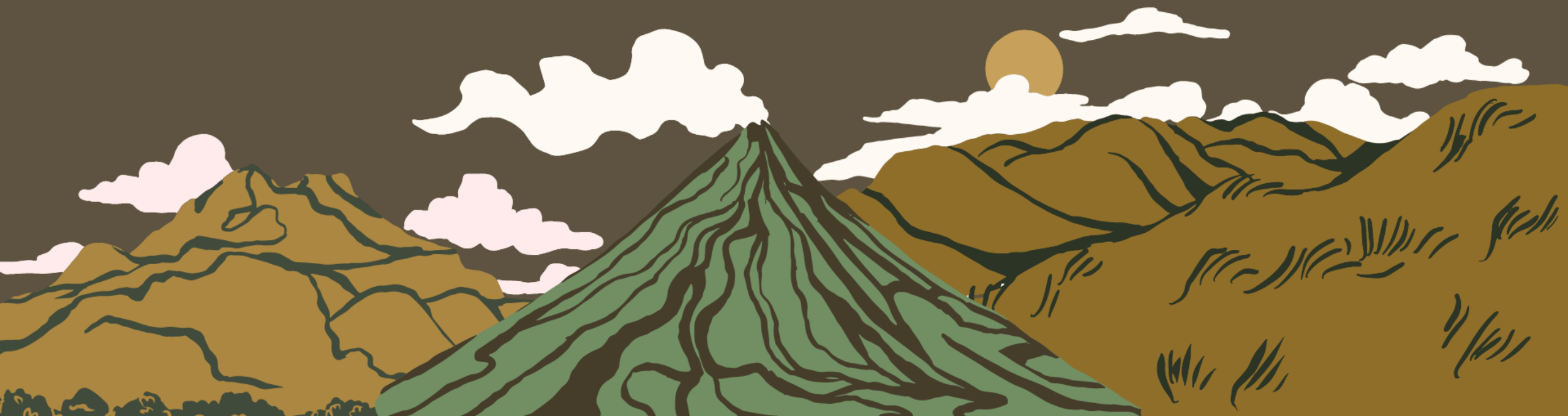


Joshua

God's Gracious Covenant Claimed



CONSEQUENCES OF SIN

Joshua 7

- I. Sin always displeases the Lord (vv. 1-5).**
 - A. Sin is disobedience to the Lord (v. 1).**
 - B. Sin is destructive to others (vv. 2-5).**

- II. Sin always devastates relationships (vv. 6-15).
 - A. Joshua is distraught before the Lord (vv. 6-9).
 - B. Joshua is deceived about the sin (vv. 10-15).

III. Sin always demands punishment (vv. 16-26).

**A. Achan desires something forbidden
(vv. 16-21).**

**B. Joshua directs the dealing with sin
(vv. 22-26).**

Conclusion:

Are you responding rightly to the temptation of sin?